



NATIONAL TYPE EVALUATION PROGRAM

Certificate of Conformance

for Weighing and Measuring Devices

For:
Load Cell
Beam, Single Point
Model: WL 1260 & WL 1263 Series
 n_{max} : 4500, Class III, Single Cell & Multiple Cell
Capacity: 75 kg to 750 kg
Accuracy Class: III

Submitted By:
Acecells Instruments Ltd.
Jiaochuan Street, Zhenhai District
Ningbo, Zhejiang
China 315100
Tel: +86-57488015609
Fax: +86-57488015609
Contact: Kerry
Email: acecells@aliyun.com
Web site: www.acecellsinstruments.com

Standard Features and Options

- Model WL 1260 & WL 1263 Series, specific load cell capacities and v_{min} values are listed in the table below.
- Nominal output: 2.2 mV/V
- Aluminum material
- 4 wire design
- Minimum Dead Load: 0 kg

Models	Capacity	V_{min} Class III		n_{max}
		Single Cell	Multiple Cell	
WL 1260				
WL 1263	75 kg	0.005 kg	0.005 kg	4500
*Load Cell Tested	100 kg	0.007 kg	0.007 kg	4500
	150 kg*	0.011 kg	0.011 kg	4500
	200 kg	0.014 kg	0.014 kg	4500
	250 kg	0.018 kg	0.018 kg	4500
	300 kg	0.021 kg	0.021 kg	4500
	500 kg	0.036 kg	0.036 kg	4500
	750 kg	0.054 kg	0.054 kg	4500

Temperature Range: -10 °C to 40 °C (14 °F to 104 °F)

This device was evaluated under the National Type Evaluation Program and was found to comply with the applicable technical requirements of "NIST Handbook 44: Specifications, Tolerances and Other Technical Requirements for Weighing and Measuring Devices." Evaluation results and device characteristics necessary for inspection and use in commerce are on the following pages.

Jerry Buendel
Chairman, NCWM, Inc.

Ronald Hayes
Chairman, National Type Evaluation Program Committee
Issued: April 29, 2016

1135 M Street, Suite 110 / Lincoln, Nebraska 68508

The National Conference on Weights and Measures (NCWM) does not approve, recommend or endorse any proprietary product or material, either as a single item or as a class or group. Results shall not be used in advertising or sales promotion to indicate explicit or implicit endorsement of the product or material by the NCWM.



Accells Instruments Ltd.

Load Cell / WL 1260 & WL 1263 Series

Application: The load cells may be used in Class III scales for single cell and multiple cell applications consistent with the model designations, number of scale divisions, and parameters specified in this certificate. Load cells of a given accuracy class may be used in applications with lower accuracy class requirements provided the number of scale divisions, the v_{\min} value, and temperature range are suitable for the application. The manufacturer may market the load cell with fewer divisions (n_{\max}) and with greater v_{\min} values than those listed on the certificate. However, the load cells must be marked with the appropriate n_{\max} and v_{\min} for which the load cell may be used.

Identification: A pressure sensitive identification label located on the cell, states manufacturer name, model, serial number, rated capacity, class, NTEP certificate number, n_{\max} and v_{\min} . Other pertinent information will be specified on the Calibration Certificate accompanying the cell.

Test Conditions: A model WL 1241, 150kg load cell was tested by the NMI Certain B.V. at The Netherlands facility. Testing was conducted in accordance with the OIML DoMC Mutual Acceptance Arrangement, signed by the NCWM as a utilizing participant for load cell testing. Testing was conducted using deadweights as the reference standard. The load cells were tested over a temperature range of -10 °C to 40 °C with tests run on each cell at each temperature. The temperature effect on zero was measured and a time dependence (creep) test was performed. The barometric pressure test to determine sensitivity of the load cell design to changes in barometric pressure was conducted. The data were analyzed for single load cell applications. OIML R60 selection criteria were used to determine cells tested.

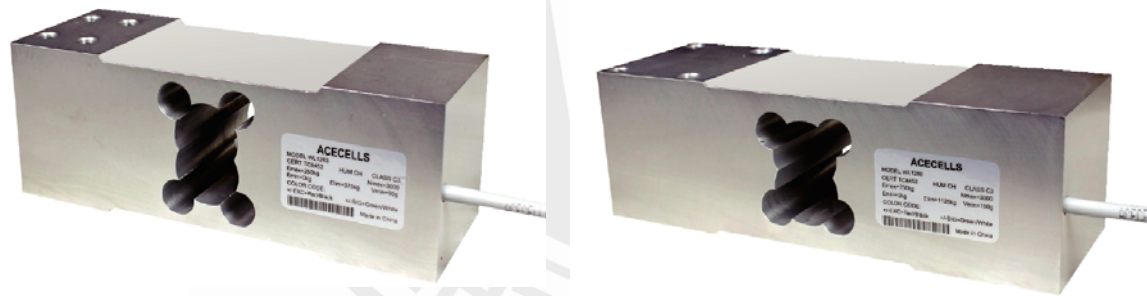
Evaluated By: E. van der Grinten, R. Scholten (NMI)

Type Evaluation Criteria Used: NIST, Handbook 44: Specifications, Tolerances and Other Technical Requirements for Weighing and Measuring Devices, 2016. NCWM, Publication 14: Weighing Devices, 2016.

Conclusion: The results of the evaluation and information provided by the manufacturer indicate the device complies with applicable requirements.

Information Reviewed By: J. Truex (NCWM)

Examples of Device:



WL 1263

WL 1260